

Service Manual

Canon BW
UFR II((iR7086-7105)

Canon

Application

This manual has been issued by Canon Inc. for qualified persons to learn technical theory, installation, maintenance, and repair of products. This manual covers all localities where the products are sold. For this reason, there may be information in this manual that does not apply to your locality.

Corrections

This manual may contain technical inaccuracies or typographical errors due to improvements or changes in products. When changes occur in applicable products or in the contents of this manual, Canon will release technical information as the need arises. In the event of major changes in the contents of this manual over a long or short period, Canon will issue a new edition of this manual.

The following paragraph does not apply to any countries where such provisions are inconsistent with local law.

Trademarks

The product names and company names used in this manual are the registered trademarks of the individual companies.

Copyright

This manual is copyrighted with all rights reserved. Under the copyright laws, this manual may not be copied, reproduced or translated into another language, in whole or in part, without the written consent of Canon Inc.

COPYRIGHT © 2001 CANON INC.










Printed in Japan

Caution

Use of this manual should be strictly supervised to avoid disclosure of confidential information.



Symbols Used

This documentation uses the following symbols to indicate special information:

Symbol	Description
	Indicates an item of a non-specific nature, possibly classified as Note, Caution, or Warning.
	Indicates an item requiring care to avoid electric shocks.
	Indicates an item requiring care to avoid combustion (fire).
	Indicates an item prohibiting disassembly to avoid electric shocks or problems.
	Indicates an item requiring disconnection of the power plug from the electric outlet.
 Memo	Indicates an item intended to provide notes assisting the understanding of the topic in question.
 REF.	Indicates an item of reference assisting the understanding of the topic in question.
	Provides a description of a service mode.
	Provides a description of the nature of an error indication.

The following rules apply throughout this Service Manual:

1. Each chapter contains sections explaining the purpose of specific functions and the relationship between electrical and mechanical systems with reference to the timing of operation.

In the diagrams,  represents the path of mechanical drive; where a signal name accompanies the symbol, the arrow  indicates the direction of the electric signal.

The expression "turn on the power" means flipping on the power switch, closing the front door, and closing the delivery unit door, which results in supplying the machine with power.

2. In the digital circuits, '1' is used to indicate that the voltage level of a given signal is "High", while '0' is used to indicate "Low". (The voltage value, however, differs from circuit to circuit.) In addition, the asterisk (*) as in "DRMD*" indicates that the DRMD signal goes on when '0'.

In practically all cases, the internal mechanisms of a microprocessor cannot be checked in the field. Therefore, the operations of the microprocessors used in the machines are not discussed: they are explained in terms of from sensors to the input of the DC controller PCB and from the output of the DC controller PCB to the loads.

The descriptions in this Service Manual are subject to change without notice for product improvement or other purposes, and major changes will be communicated in the form of Service Information bulletins.

All service persons are expected to have a good understanding of the contents of this Service Manual and all relevant Service Information bulletins and be able to identify and isolate faults in the machine."

Contents

Chapter 1 Specifications

1.1 Specifications	1- 1
1.1.1 UFR II Printer Driver	1- 1
1.1.2 UFR II FONT HANDLING	1- 2
1.1.3 Device Finishing	1- 2

Chapter 2 Functions

2.1 Basic Function	2- 1
2.1.1 Canon Driver Information Assist Service (DIAS)	2- 1
2.1.2 FTP Printing	2- 1
2.1.3 Secured Print Jobs	2- 2
2.1.4 Up to 50 mm of Gutter	2- 4
2.1.5 Processing on System	2- 5
2.1.6 Print Pause	2- 5
2.1.7 Format Settings	2- 5
2.1.8 Staple & Group	2- 6
2.2 Changed Function	2- 7
2.2.1 Device Settings	2- 7
2.2.2 Custom Paper Size Settings Unit(Millimeter-Inch)	2- 7
2.2.3 Application Color Matching Priority	2- 8
2.3 New Function	2- 8
2.3.1 Custom Paper Size Settings(Long Paper)	2- 8
2.3.2 Finishing(Number of Copies for Offset)	2- 9
2.3.3 Proof Print	2- 9
2.3.4 Perfect Binding	2- 10
2.3.5 Use Creep(Displacement)Correction	2- 11
2.3.6 Countermeasure against Memory full	2- 12
2.3.7 Use Skip Blank Pages Mode	2- 12
2.3.8 Line Refinement	2- 13
2.3.9 Front/Back Cover Settings	2- 14

Chapter 1 Specifications

Contents

1.1 Specifications	1-1
1.1.1 UFR II Printer Driver	1-1
1.1.2 UFR II FONT HANDLING	1-2
1.1.3 Device Finishing.....	1-2

1.1 Specifications

1.1.1 UFR II Printer Driver

The UFR II assigns print processing loads to the print driver and the print controller for high-speed, low-cost outputs.

Advantages

- While the features are enhanced, the memory usage can be saved supporting both page and band descriptions.
- Balancing the data processing loads of the driver and controller allows high-speed outputs.

T-1-1

Specification	
UFR II	
Data processing	600/1200dpi
Effective print	main scanning:2.5mm sub scanning:Top 4.5mm, Bottom 2.5mm

Supported operating systems

T-1-2

Windows 2000 Professional/Server/Advanced Server
Windows XP Home Edition/Professional Edition(32 bit)
Microsoft Windows XP Professional x64 Edition (64 bit)
Microsoft Windows Server 2003 (32 bit)
Microsoft Windows Server 2003 x64 Edition (64 bit)
Mac OS X v10.2.8-V10.4.2

The UFR II print driver requires 5.0 mm of the top, bottom, left, and right margins.

-Even if Print with Upper Left of Sheet as Starting Point option is selected, marginal areas of the data for a page are missing in some print results. To solve this problem, adjust the scaling so that the data fit into the printable area and print the data again.

Non-default paper:

T-1-3

	UFR II			
	Effective print area(mm)		End of Paper(mm)	
	Main scanning	Sub scanning	Main scanning	Sub scanning
Custom Size Minimum	90.00	138.00	5.00	5.00
Custom Size Maximum	287.00	422.00	5.00	5.00
Long sheet minimum	90.00	423.00	5.00	5.00
Long sheet Maximum	287.00	622.00	5.00	5.00

0mm Mode

T-1-4

	0mm Mode			
	Effective print area(mm)		End of Paper(mm)	
	Main scanning	Sub scanning	Main scanning	Sub scanning
Custom Size Minimum	95.00	141.00	2.50	Top 2.50 Bottom 2.50
Custom Size Maximum	292.00	425.00	2.50	Top 2.50 Bottom 2.50
Long sheet minimum	95.00	426.00	2.50	Top 2.50 Bottom 2.50
Long sheet Maximum	292.00	623.00	2.50	Top 2.50 Bottom 2.50

Paper Size:

T-1-5

Paper Name	Paper Size (mm)	
	Width	length
A3	297.0	420.0
A4	210.0	297.0
A5	148.5	210.0
B4	257.0	364.0
B5	182.0	257.0
11 x 17	279.4	431.8
LEGAL	215.9	355.6
LETTER	215.9	279.4
STATEMENT	139.7	215.9
EXECUTIVE	184.2	266.7

Area-Specific Paper Sizes:

In addition to default paper sizes (A4/LTR) and user-defined paper sizes, the printer driver supports area-specific paper sizes (e.g., Officio), and it handles these area-specific paper sizes as user-defined paper sizes, requiring the user to register them in advance of use. To do so, see the instructions on registering user-defined paper sizes for individual operating systems.

When an area-specific paper size is manually set up under [Form to Tray Assignment] of the driver UI, or if the size obtained by running dynamic configuration happens to be an area-specific paper size, the driver operates in the corresponding mode. After performing all associated internal operations, the driver runs a check of area-specific paper sizes stored as user defined paper sizes, and handles any matching paper as a default paper size (special paper ID) instead of as a user-defined paper size. Moreover, the driver permits registration of multiple area-specific paper sizes, treating them as a separate paper group. The driver UI handles them using specifications designed for LTR paper, permitting the use of finisher functions, which were previously offered for user-defined paper sizes (except the use of the middle binding function). Although it will permit all settings, the printer unit may ignore some of the settings. (The printer driver will simply ignore them, not issuing conflicts.)

Local Standard

T-1-6

Paper size	Dimensions(mm)	
	Width	Height
G_LTR	267.0	203.0
G-LTRR	203.0	267.0
K-LGL	268.0	190.0
K-LGLR	190.0	268.0
FLSP	216.0	330.0
OFI	216.0	317.0
E-OFI	220.0	320.0
A-LGL	220.0	340.0
A-OFI	220.0	340.0
M-OFI	216.0	341.0
G-LGL	203.0	330.0
FOLIO	210.0	330.0
A-FLSP	206.0	337.0
A-LTR	280.0	220.0
A-LTRR	220.0	280.0
8K	270.0	390.0
16K	270.0	195.0

Supported Paper Types:

T-1-7

Paper Type	Paper Size
PLAIN RECYCLED COLOR LETTERHEAD	A3,B4,A4/A4R,B5/B5R,A5R,11x17,LGL,LTR/ LTRR,STMTR,EXEC,Local standard,Custom paper
BOND HEAVY	A3,A4/A4R,A5R,11x17,LGL,LTR/ LTRR,STMTR,EXEC,8K,16K
OHP	A4,LTR
LABELS	A3,B4,A4,LTR
Tracing Paper	A3,A4/A4R
3-hole Punch	A4,LTR
Tab Paper	A4,LTR

1.1.2 UFR II FONT HANDLING

Font Handling:

Device fonts are not used as the printing uses the UFR II driver.

GDI raster fonts cannot be used - e.g.,

One Byte - Courier, MS Sans Serif, and MS Serif.

Two Byte - FixedSys, System, Small Fonts, Terminal

GDI vector fonts can be used - e.g.,

One Byte - Modern, Roman, and Script.

TrueType fonts can be used - e.g.,

One Byte - Arial, Courier New, Symbol, Times New Roman

Note.

Each font becomes usable by the font addition to Windows.

1.1.3 Device Finishing

The table below shows the Finishers that are supported by each device.

T-1-8

Finisher	Staple			Offset	Hole Punch	Saddle Stitch	Z-Fold
	Position	Available paper size	Maximum no. of sheets				

Finisher-V1/V1L	Single	A3/ B4/ 11x17/ 8K/ A4/ LTR/ A_LTR/ 16K/ B5/ G_LTR/ K_LGL/ LGL/ FLSP/ OFI, E_OFI, A_LGL, A_OFI, M_OFI, FOLIO	100 sheets or	O	O	X	O
	Double	A3/ B4/ 11x17/ 8K/ A4/ LTR/ A_LTR/ 16K/ B5/ G_LTR/ K_LGL	50 sheets *1				
Saddle Finisher-V2/ V2L	Single	A3/ B4/ 11x17/ 8K/ A4/ LTR/ A_LTR/ 16K/ B5/ G_LTR/ K_LGL/ LGL/ FLSP/ OFI, E_OFI, A_LGL, A_OFI, M_OFI, FOLIO	100 sheets or	O	O	O	O
	Double	A3/ B4/ 11x17/ 8K/ A4/ LTR/ A_LTR/ 16K/ B5/ G_LTR/ K_LGL	50 sheets *1				
High Capacity Stacker-A1	X			O	X	X	X

*1: Dependent on the staple cartridge
100-sheet cartridge Large-size paper: 50 sheets
Small-size paper: 100 sheets
50-sheet cartridge All sizes of paper: 50 sheets

Chapter 2 Functions

Contents

2.1 Basic Function	2-1
2.1.1 Canon Driver Information Assist Service (DIAS)	2-1
2.1.2 FTP Printing	2-1
2.1.3 Secured Print Jobs	2-2
2.1.4 Up to 50 mm of Gutter	2-4
2.1.5 Processing on System	2-5
2.1.6 Print Pause	2-5
2.1.7 Format Settings.....	2-5
2.1.8 Staple & Group.....	2-6
2.2 Changed Function.....	2-7
2.2.1 Device Settings.....	2-7
2.2.2 Custom Paper Size Settings Unit(Millimeter-Inch)	2-7
2.2.3 Application Color Matching Priority	2-8
2.3 New Function	2-8
2.3.1 Custom Paper Size Settings(Long Paper)	2-8
2.3.2 Finishing(Number of Copies for Offset).....	2-9
2.3.3 Proof Print	2-9
2.3.4 Perfect Binding.....	2-10
2.3.5 Use Creep(Displacement)Correction	2-11
2.3.6 Countermeasure against Memory full	2-12
2.3.7 Use Skip Blank Pages Mode	2-12
2.3.8 Line Refinement	2-13
2.3.9 Front/Back Cover Settings	2-14

2.1 Basic Function

2.1.1 Canon Driver Information Assist Service (DIAS)

This is a subset version of the NetSpot Suite Service, supporting Driver only: we have selected Driver's functions (mainly, the functions to acquire Device configuration information) and redesigned them. The DIAS has the following functions:

- To acquire Device configuration information (acquisition when setting up Printer Property.)
- To acquire calibration information (acquisition when setting up Printer Property and printing by the color LBP, Color iR, and etc.)
- To make recognition in department-control printing (communication when setting up Printer Property or when making a department-control print)

Main structure of DIAS

DIAS (DLL): It is a module loaded on Driver

DIAS (Service): It does a service of installation on printer server when using a shared printer (resident process)

CBT: It is a module group to control a local port, such as Centronics Cable or USB

H-VDC: It is a module group which are needed for the driver function in DIAS.

Characteristics of DIAS

- Local printer can acquire the configuration information in DIAS (DLL) only.

Local printer means a printer that is "Peer to Peer" connected with Local PC via LPR/IPP/Centronics Cable/USB and that Spooler (Print queue) appears on the Local PC.

- Shared printer needs to have DIAS (Service) installed on printer server.

The installation of DIAS (Service) must be done via Driver installer.

Shared printer means a printer whose Spooler (Print queue) appears on the printer server (Remote PC).

- However, in some cases, DIAS (Service) needs to be installed for Local Port connection. (See "Help" > "Troubleshoot the acquisition of configuration information".)

1, WinNT4.0 OS Family (All)/ At the time of Local Port connection (LPT)

2, Win2k Server OS Family (Except Professional)/At the time of Local Port connection (LPT/USB) and Terminal Service introduction

3, WinXP Home/Professional Edition/ServerOS 2003 Family (X86:All)/ At the time of Local Port connection (LPT/USB) and Terminal Service introduction

About the version indication

The same Driver version indication as the one via NetSpot Suite Service appears only when communicating with Device via DIAS (Service) (i.e., when connected through a shared printer).

Compatibility of DIAS and NetSpot Suite Service

DIAS and NetSpot Suite Service are compatible and independent. Driver supporting DIAS does not use NetSpot Suite Service even if it is installed.

Cautions when using DIAS

CBT controls all access to Local Port; both DIAS (DLL/Service) and NetSpot Suite Service use CBT to access Local Port from the same PC.

CBT was installed only on NetSpot Suite Service before; it is automatically uninstalled in response to uninstalling the existing NetSpot Suite Service. Follow the procedures below when uninstalling the former versions of NetSpot Suite Service v3.40 and when uninstalling JobMonitor v4.20 and former.

- Reinstall DIAS after the uninstallation is complete. (Reinstallation of DIAS is enabled via Installer.)

- Update NetSpot Suite Service to the latest version (v3.40 and later).

Former versions of NetSpot Suite Service v3.40

PS Printer Driver v2.10 and former

PCL5e Printer Driver v6.11 and former

PCL5c Printer Driver v6.11 and former

PCL6 Printer Driver v6.11 and former

UFR Printer Driver v1.10 and former

JobMonitor v4.10 and former

About a file name of the CBT module

Following files are installed in the 'c:\Windows\system' folder. (For Windows XP/Windows 2000/NT/Server2003, this folder name is to be '%SystemRoot%\system32'.)

AuPort.exe

NBCBTNT.dll / NBCBT95.dll

NBPORTNT.exe / NBPORT95.exe

NBLOCALT.dll

nbcbspt.dat

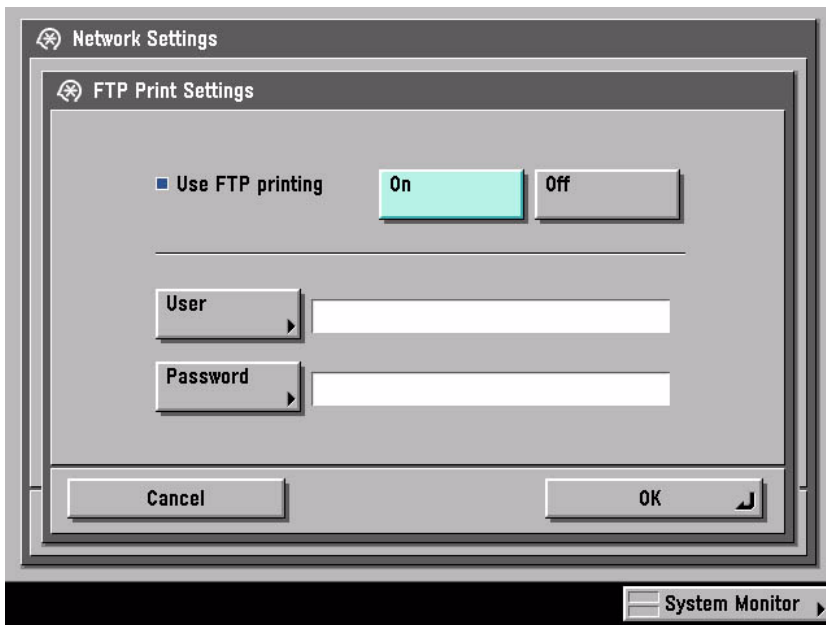
Method of confirming when CBT is deleted

The following message is displayed.

"Failed to obtain device information Make sure no printer error occurred and printout port setting is correct."

2.1.2 FTP Printing

This device provides a FTP server for receiving print data. The device can accept print jobs sent in FTP from client PCs. This is called FTP printing, a new feature first employed on iRC 6800. To use this feature, the FTP Print option must be selected. It is selected by default. You can access the option by pressing Ad Func, System Settings, Network Settings, TCP/IP Settings, and FTP Print Settings buttons. In FTP Print Settings screen, only one pair of a user name and password can be entered for the user who can log in to the FTP server. No settings are made for both of the fields by default.



F-2-1

Commands

The FTP server complies with the RFC 959 -- File Transfer Protocol -- but provides only printing function. Thus the server does not support other functions required as a RFC 959 compliant server. The commands available for the FTP client are "user," "password," "bin," "put," "bye," "hash," and "help." There is no use of other commands since the server does not provide functions other than printing. The following lists the notes to use the commands.

- To send print data with the command "put," set the mode to the binary mode using the command "bin." In the ascii mode, the data cannot be sent with the command "put."

- If the user and password fields are blank, any user with any password can log in. If the user name "anonymous" is used, any character string can be entered as the password. The device displays the string in User filed of Log screen.

- This function is featured mainly to print prn files output from PDL drivers. The device processes text files and the like as it receives data in LPR (and does not properly print depending on settings.) The device of PostScript-compatible model can print PDF files, compatible with PDF V1.3.

The following shows a command specification example, which you will connect the device of the IP address "172.16.181.131" in FTP with the user name "test" and the password "test" and print the file "test.prn" in the root directory of the drive C on the client PC.

```
C:\>ftp 172.16.181.131
Connected to 172.16.181.131.
220 Connection established.
User (172.16.181.131:(none)): test
331 Password required to login.
Password: Note: The password is not displayed.
230 User test logged in.
ftp> bin
200 Type set to IMAGE (binary).
ftp> put c:\test.prn
200 PORT command successful.
150 Opened BINARY data connection for file transfe
226 Transfer complete.
ftp: 15871 bytes sent in 0.00Seconds 15871000.00Kb
ftp> bye
221 Server closing down connection.
```

C:\>

Number of Connections and Used Ports

The maximum number of concurrent connections is three. If a user attempts to connect to the FTP server with which three connections have been established, the user cannot log in and fails in connection. The default port for the FTP server is 21. There is no measure provided to change the port.

The control port time-out is set to 300 seconds. You need to re-connect to the server if you have left the connection for 300 seconds or more after logging in. The data port time-out is 60 minutes. If a data transmission takes more than 60 minutes, the connection is automatically disconnected.

2.1.3 Secured Print Jobs

Overview:

Secured Print is the function that a password is provided to the PDL(UFR II and PCL) print job and it is sent to the device. Then, it is rasterized on the device side, saved in the image server and output by entering the password from the device's panel. This function is used when dealing with the documents which you do not want other people to see, such as confidential documents.

a) Password is provided.

In order to conduct the Secured Print, the printer driver requires the user to enter the password from GUI. This password is provided to the print job and it is sent to the device. This function can be conducted by using CPCA protocol(UFR II and PCL).

b) Job execution and pending

PDL print job sent to the device as the Secured Print job is compiled on the job queue like the normal PDL print job. Then, it is rasterized by PDL interpreter, saved in the image server as the document image file and becomes pending here. However, all job information, such as paper supply/output, the number of copies and finishing information remains.

c) Job started by entering the password

If the Secured Print job is pending, the display indicating the pending state appears on the job status screen of the panel. If you select this job from the panel, you are required to enter the password. When the password you entered is same as the password provided from the printer driver, the pending job will be started. When the password is different, the job is treated as an error, so it is not started and it remains in the pending state. Entering the password to start the job cannot be executed before the Secured Print job transfers to the pending state.

d) Output

The started Secured Print job is output to the printer engine with the top priority. This top priority means that if the jobs can be changed in priority order, the Secured Print job can be prioritized. This job is proceeded according to all job information specified by the printer driver, etc., such as paper supply/output, the number of copies and finishing information. When the processing is completed and all documents are output, the documents and job information stored in the image server are deleted.

e) Operations for Secured Print jobs

Like other print jobs, Secured Print jobs can be deleted, interrupted, restarted and promoted by operating from the status screen of the print job. Regarding these operations, the device side does not distinguish from operations of the normal PDL job. That is, the password entry is required only when the job is output. If you interrupt or restart the job during outputting, the password setting and matching are not conducted.

f) Automatically delete of Secured Print Jobs

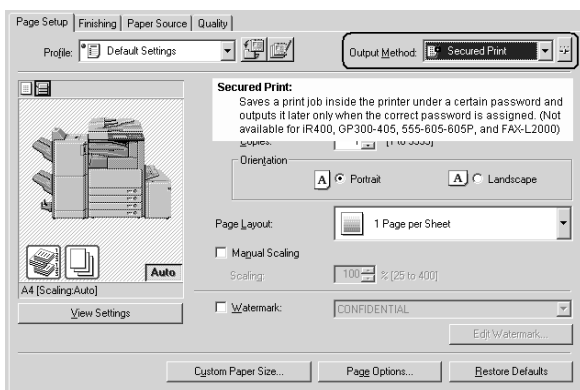
When Secured Print Job is continuing being suspended for a long time, apparatus deletes a job automatically.

There are options for automatic job deletion time -- 1, 2, 3, 6, 12, and 24 hours. With a view of security and memory usage, no option longer than 1 day is available. The elapsed time starts after all the processes for the PDL data and the rendering for all the image data, for which Secured Print is specified, are finished.

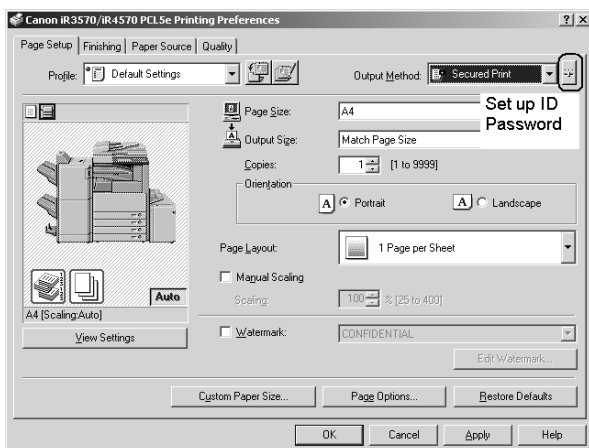
g) Specifications and Limitations on Secured Print Jobs

The limitations on Secured Print jobs are listed as follows.

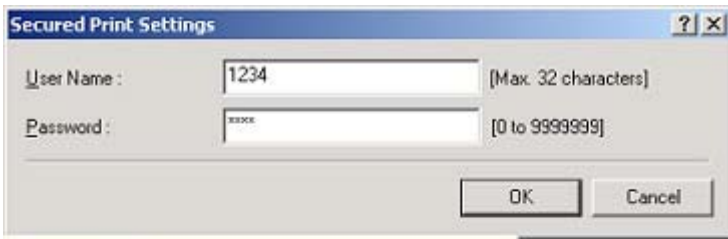
- Once data of a Secured Print job is printed, it is immediately deleted and cannot be printed any more.
- If the power for the controller is shut down, unprinted data of a Secured Print job is deleted from the printer.
- All the job information, represented by the paper source and output information, information of the number of copies, and finishing information, cannot be changed on the printer.
- If the entire raster information for a Secured Print job cannot be stored in the image server (hard disk drive) due to insufficient memory, the job results in an error, to be deleted.
- Up to 50 Secured Print jobs of image data being rendered and left unprinted can be stored.



F-2-2



F-2-3

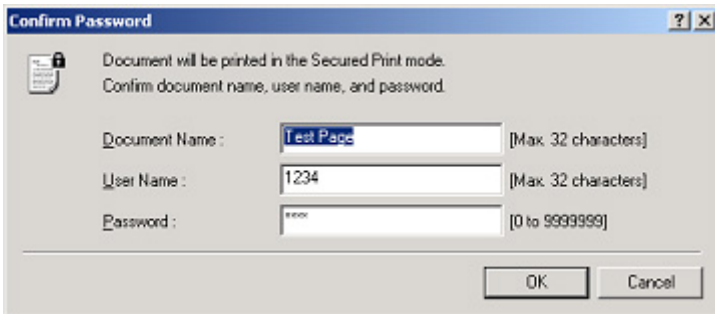


User Name
 Specifies the user name for secured printing. Up to 32 characters can be entered.

Password
 Specifies a numerical password.
 Enter up to a maximum of 7 digits registered as a password in the printer. You can enter numbers from 0 to 9999999, or leave the box blank.

NOTE:
 You can specify the password only when the Job Accounting check box and the Allow Password Setting check box are selected in the Device Settings sheet.

F-2-4

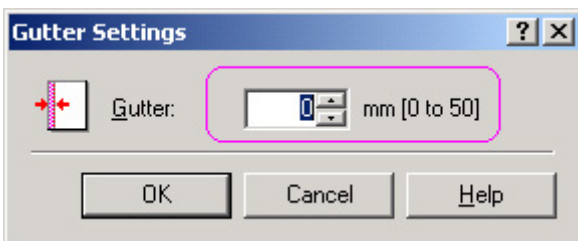


F-2-5

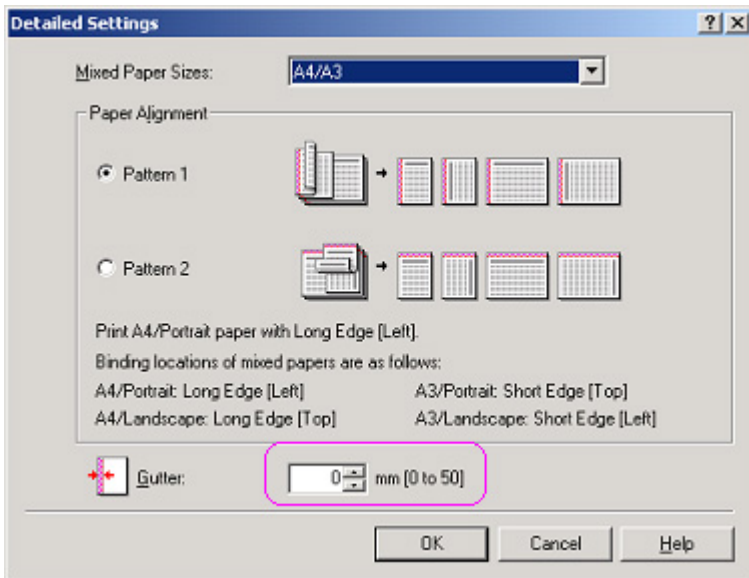
2.1.4 Up to 50 mm of Gutter

Up to 50 mm of the gutter can be specified. The gutter can be adjusted within a range from 0 mm to 50 mm in 1 mm increments. The local UI and the print driver have the controls for the gutter settings.

The image is shifted to the width value specified for gutter, making a margin. If the shift causes the image to overflow from the printable area, the overflowing area is missing from the print results. The overflowing image will not be reduced to fit into the printable area.



F-2-6



F-2-7

The gutter width range changed to 0-50 mm.
 US: 0.0 to 2.0 inches
 UK: 0.0 to 50.0 mm

2.1.5 Processing on System

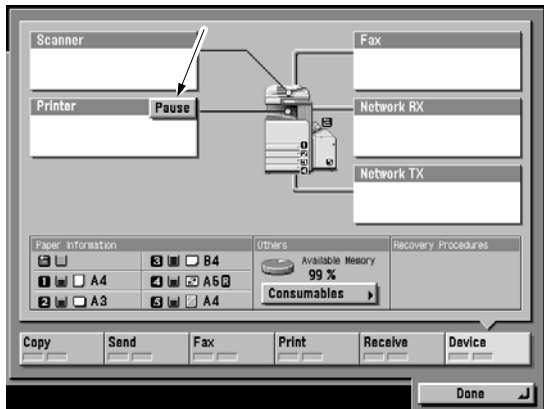
Processing after Power Shutdown

If the power is shut down during PDL data processing, all the image data temporarily stored in the hard disk drive to be printed or stored in Mail Boxes are destroyed and the jobs are canceled. PDL data stored in the hard disk drive immediately before a power shutdown are destroyed as the power is shut down. Processing the data of those, therefore, will not resume when the power is turned on after the shutdown. Jobs interrupted by a power shutdown will be displayed in the Log list with the End Code "NG (#852)."

2.1.6 Print Pause

You can suspend ongoing printing of all jobs from the control panel. Likewise, you can resume the printing working from the control panel. There will be no suspension of data input for the network or PDL processing. To enable Print Pause, use the following service mode:

```
COPIER>OPTION>USER>PR-PSESW
0: disable (do not indicate)
1: enable (indicate)
(default: '0')
```



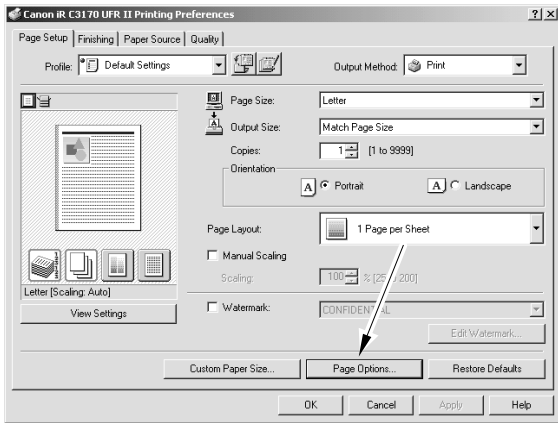
F-2-8

2.1.7 Format Settings

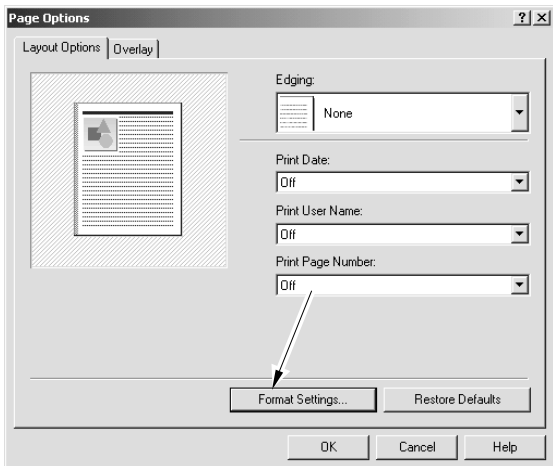
A function to enable the selection of the following will be added in regard to the text used to print the result of a job and the following notations to the lead or trail edge: Print Date, Print User Name, Print Page Number:

Font
 Style
 Size
 Color

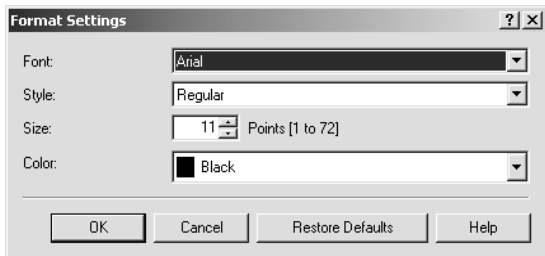
A change made to Format Settings will affect the following in common, and individual selection will not be possible: Print Date, Print User Name, Print Page Number.



F-2-9



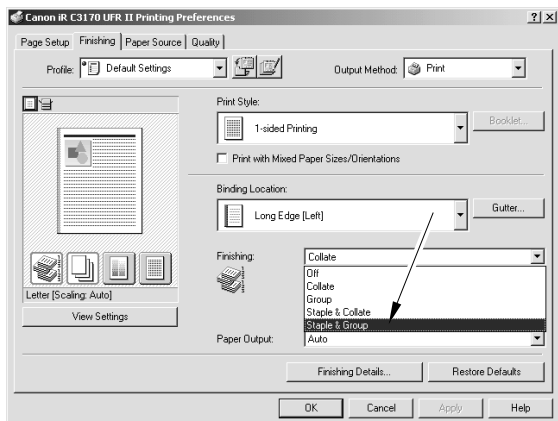
F-2-10



F-2-11

2.1.8 Staple & Group

You can use it to enable the selection of stapling when printing in Group mode. Staple & Group permits stapling of pages in sets.



F-2-12

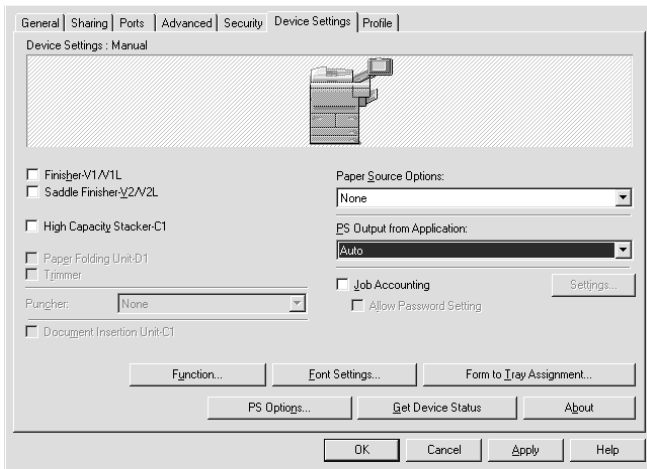
If 'Store' is selected as 'Output Method' on the Finishing tab, [Staple & Group] will be grayed out, not permitting selection.

If 'Store' is selected as 'Output Method' while selecting [Staple & Group], a switchover will take place for [Finishing] so that [Staple & Group] will be [Collate].

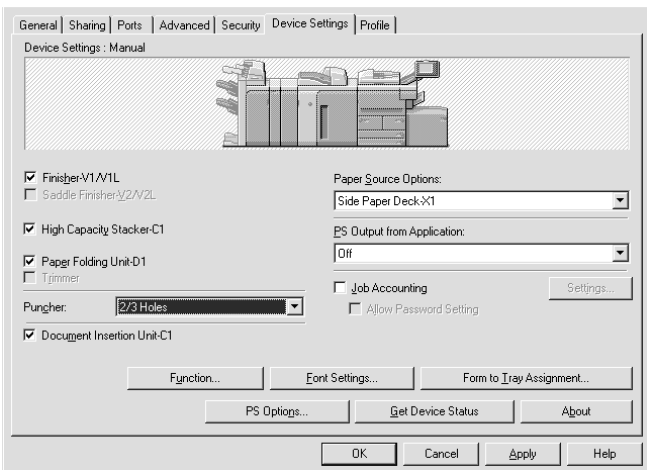
2.2 Changed Function

2.2.1 Device Settings

In order to check if each option is set correctly, click a tab of 'Device Settings' on the properties screen of printer driver.



F-2-13



F-2-14

How to select [Perfect Binder-A1] and [Document Insertion Unit-C1]:

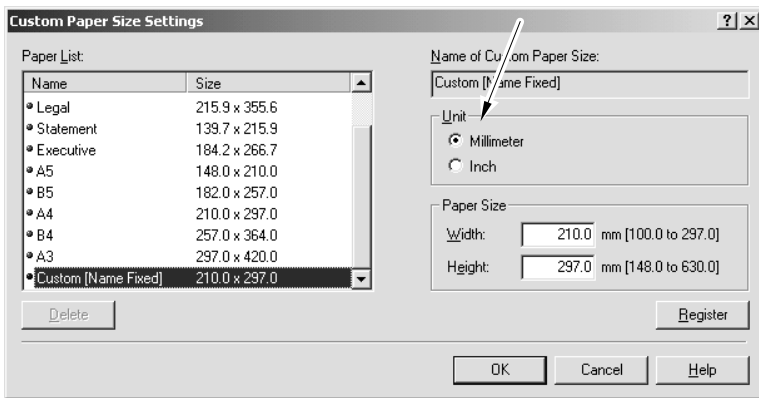
- Devised Settings>Function>Device Function Settings_Function Version then 2.0 or later.
- Back to Devised Settings then press Apply.
- Select Perfect Binder-A1 and Document Insertion Unit-C1.

Specification:

- If Finisher-V1/V1L is checked Sddle Finisher-V2/V2L is disabled, and vice versa.
- Pper Folding Unit-D1 and Punch will only be enabled Finisher-V1/V1L or Saddle Finisher-V2/V2L is checked
- Trimmer will only be enabled if Saddle Finisher-V2/V2L is checked.
- Punch will only be enabled Finisher-V1/V3 or Saddle Finisher-V2/V2L is checked.
- If(Saddle)FinisherV1/V2/V1L/V2L is cheked, Document Insertion Units-C1 is enabled but unchecked.
- If Perfect Binder-A1 is checked, Document Insertion Units-C1 is enabled but unchecked.

2.2.2 Custom Paper Size Settings Unit(Millimeter-Inch)

In the past, paper size was displayed in millimeter or inch depending on the destinations concerning the custom paper size settings. This printer driver enables users to select the unit (Millimeter or Inch).



F-2-15

2.2.3 Application Color Matching Priority

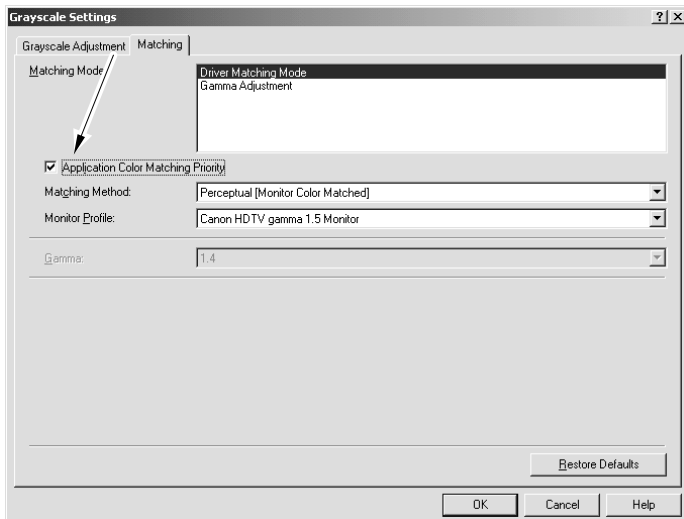
There have been some cases that color reproducibility may become inappropriate if users perform color matching in the printer driver again though they have already done it in PC.

When the checkbox for Application Color Matching Priority under [In Quality > Manual Grayscale Settings > Grayscale Settings > Matching] is cleared, it can declare to the application software on PC that Driver handles ICM processing.

This notice enables to perform Image Color Matching processing as designated in printer driver UI since the process is not done to the color values given from OS to driver.

Though Application Color Matching Priority is set to on as default so that existing version can be compatible, when specified color tinge cannot be materialized, clearing the checkbox makes it manageable.

Applicable OS: Windows2000, Windows XP, Windows 2003 Server



F-2-16

2.3 New Function

2.3.1 Custom Paper Size Settings(Long Paper)

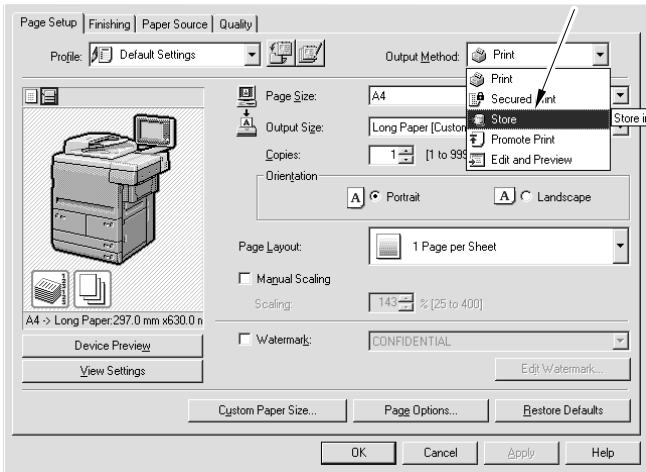
Long Paper is available as Custom Paper Size.

Long Paper size can be input as a panel setting value.

The restrictions on Long Paper are described below.

-In Long Paper, 1200 dpi resolution is not available. When Long Paper is selected, 1200 dpi resolution is not selectable. If 1200 dpi resolution is specified at the start of job, it is processed with 600 dpi.

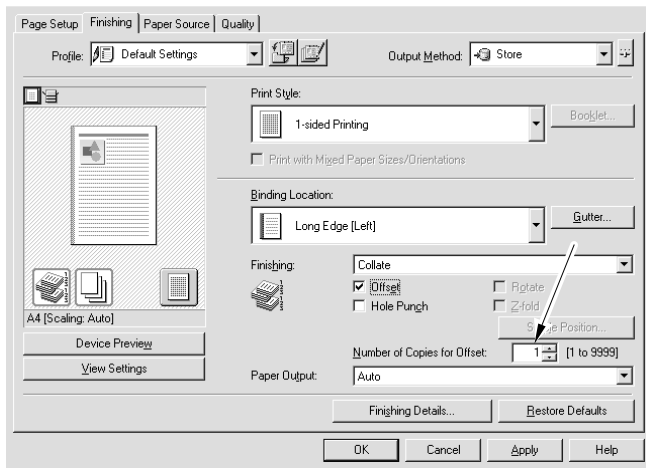
-Long Paper job cannot be stored in inbox. When Long Paper is selected, [Store] is not selectable in [Output Method]. If users select [Store], it is automatically changed to [Print].



F-2-17

2.3.2 Finishing(Number of Copies for Offset)

Finishing is done by designated number of copies for offset. The number can be specified from 1 to 9999.



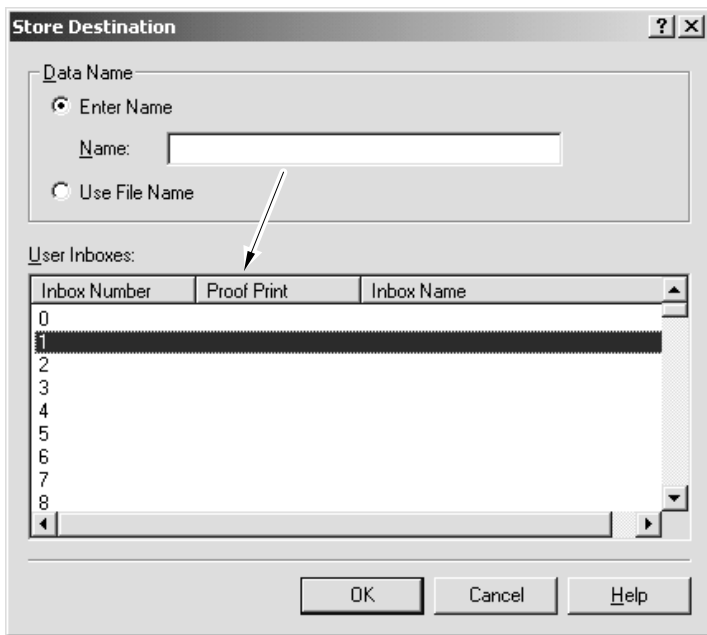
F-2-18

2.3.3 Proof Print

When registering data in inbox, print a copy at the same time.

How to set Proof Print:

1. Specify the inbox number to execute 'Proof Print' on the control panel of the iR main body.
2. Execute 'Get Device Status' in the driver and write the data in UI.
3. When specifying the inbox number designated to execute 'Proof Print' and then printing, Proof Print is done.



F-2-19

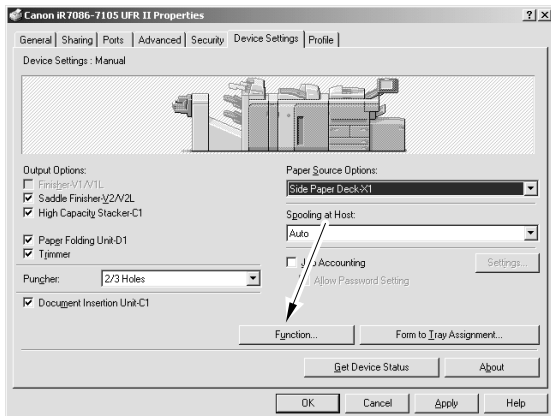
2.3.4 Perfect Binding

Perfect Binding requires Perfect Binder-A1.

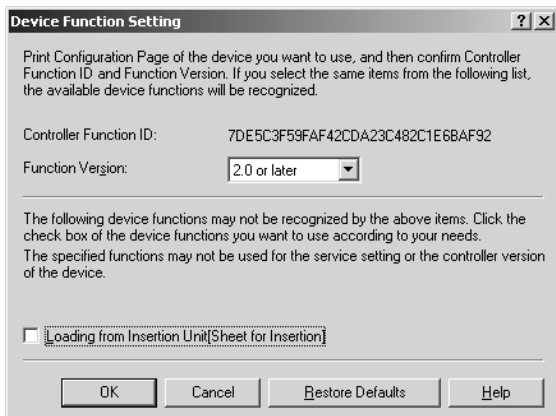
Perfect Binding is a function that pastes the binding margins of pages of multi-page document, puts the cover on them, and executes a booklet printing process.

You need set up "2.0 or later" on Printer Properties.

Printer Properties > Device Settings > Function
 Device Function Setting > Function Version > 2.0 or later



F-2-20



F-2-21

Following printing methods are selectable in the printer driver.

- Addition of [Perfect Binding] to [Print Style]
- [Perfect Binding] is added besides the existing [Booklet Printing].
- When selecting [Perfect Binding], [Perfect Bound Cover Settings], which is used for detailed settings, appears as shown above.
- Addition of [Perfect Bound Cover Settings]

It is used for detailed settings of the perfect bound cover.

Paper Size: Set the paper size of cover

Print Style: Set if printing or not on the cover.

Front Cover Print Side: Set on which area of the front cover to be printed.

Back Cover Print Side: Set on which area of the back cover to be printed.

Paper Source: Set from where the cover sheet is picked up.

- Addition of [Body Page Size]

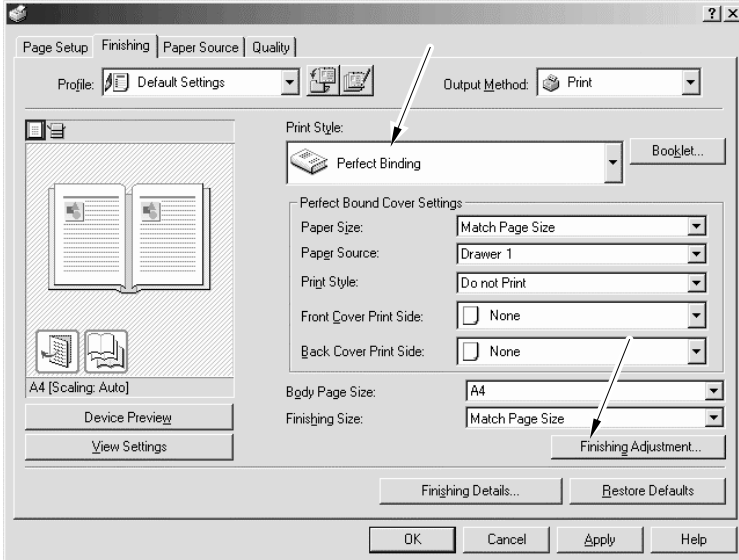
Set the size of paper actually picked up.

- Addition of [Finishing Size]

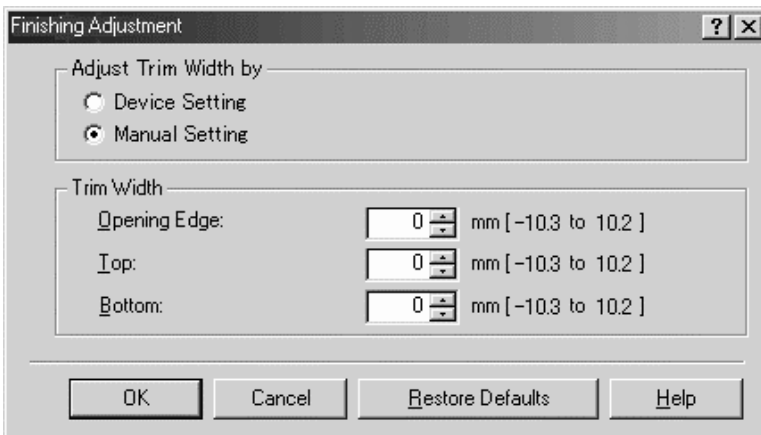
Set the paper size of finished bookbinding.

- Addition of [Finishing Adjustment]

Set the trimming width of three sides (opening edge, top, bottom).



F-2-22



F-2-23

2.3.5 Use Creep(Displacement)Correction

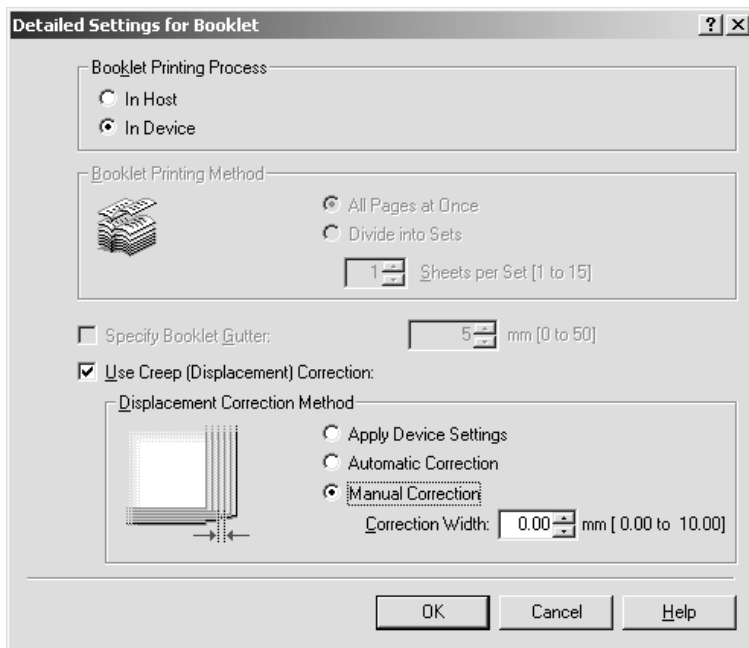
This function is used to correct creep (displacement) among pages, of which the binding margins are set by paper type, when the booklet printing process is done in device so that the drawing on every page can be shown at a certain distance from the opening edge which is trimmed by a trimmer and the like.

It becomes available when [Booklet Printing] is selected in [Print Style].

Finishing > Print Style: Booklet Printing > Booklet.. >Detailed Settings for Booklet

If [In Device] is selected in [Booklet Printing Process], [Use Creep (Displacement) Correction] becomes selectable.

If [In Host] is selected, Page Composer is used as before.



F-2-24

2.3.6 Countermeasure against Memory full

When a memory full (when a memory to store image data cannot be secured) occurs during the PDL printing process, take a measure of either of the followings.

1. Cancel the job immediately.
2. Wait until the memory can be available and continue the processing.

When the job is canceled, it results in an abnormal end, of which the job history code is recorded in the history as shown in the table below. Printing processes which are necessary to store image data temporarily are those shown in the column of 'Printing process' in the table below.

T-2-1

Job history detailed code	Outline	Printing process
#037	A job has been canceled due to a memory full.	Printing of multiple number of copies in sort mode Booklet Printing and Saddle
#0851	An inbox full when the job is stored in the inbox.	Stitch Secured Print Inbox Store Proof Print Advance RIP Print mode Job of multi-job binder

2.3.7 Use Skip Blank Pages Mode

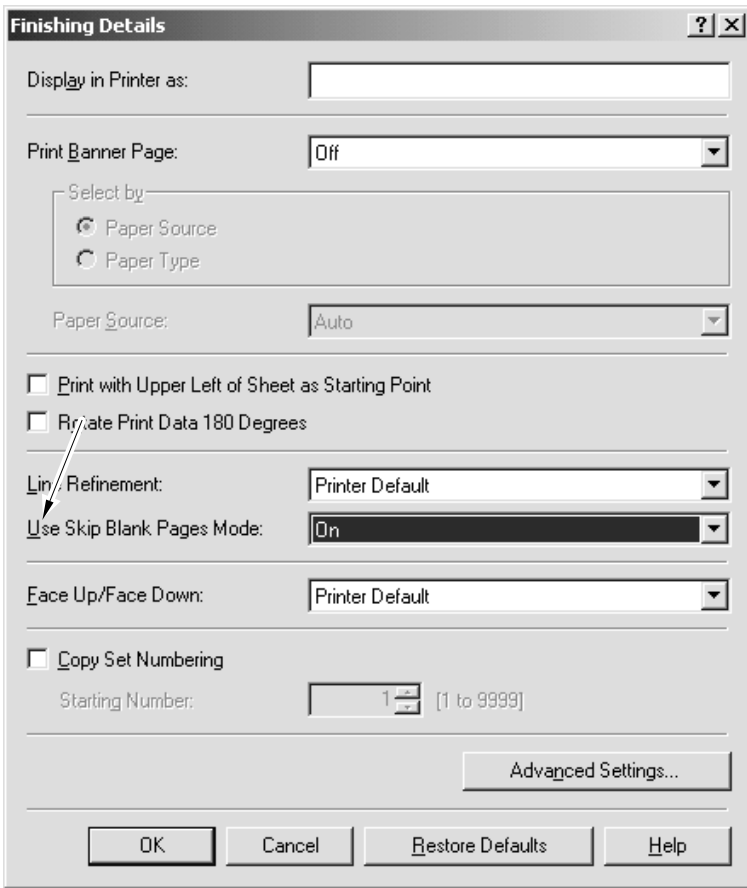
If [Use Skip Blank Pages Mode] is set to [On], blank pages are skipped even if [2-sided Printing] is set in [Print Style].

For instance, when the first page is blank and the second and third pages have data, the first page is skipped, the data of second page is printed on the front side of the sheet, and that of third page is printed on the back side of the same sheet.

Similarly, when the first page has data, the second is blank and the third has data, the data of first page is printed on the front side of the sheet, the second page is skipped, and the data of third page is printed on the back side of the same sheet.

Though the setting of [Skip Blank Pages] is conducted on the control panel of the iR main body, a printer driver released this time enables users to specify the setting in the driver.

[Finishing] - [Finishing Details]

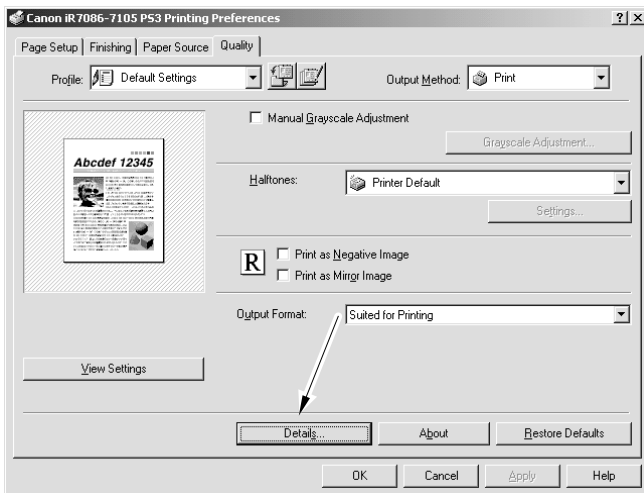


F-2-25

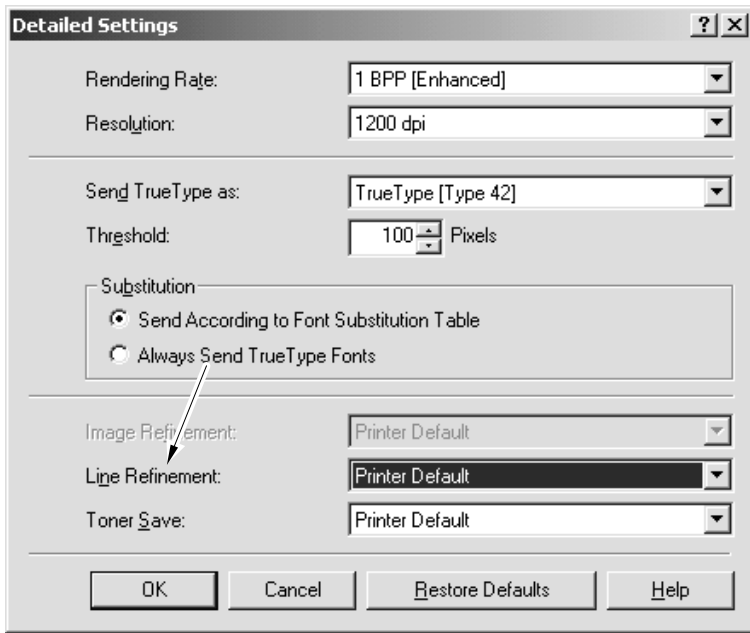
2.3.8 Line Refinement

Line Refinement:

This function uses a method that 1 dot is drawn as 2 dots by the setting on the printer driver, and that can prevent image losses.



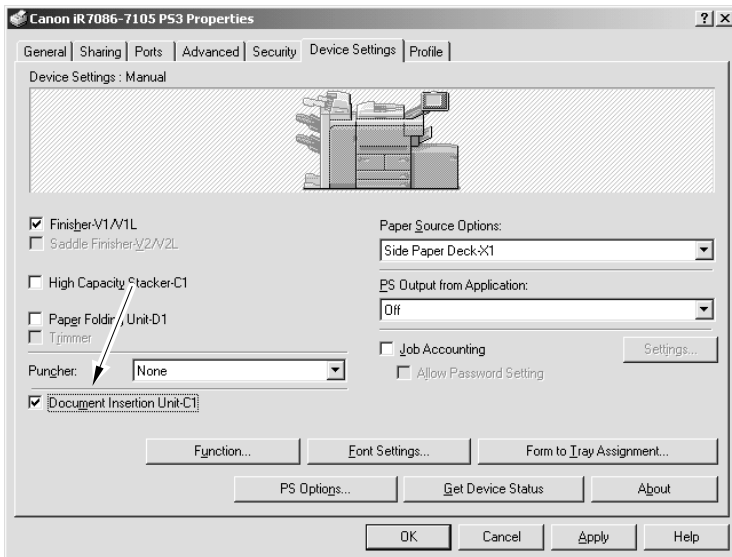
F-2-26



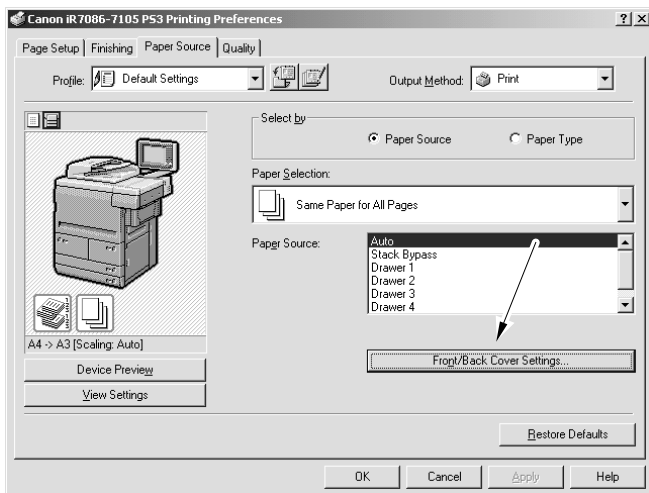
F-2-27

2.3.9 Front/Back Cover Settings

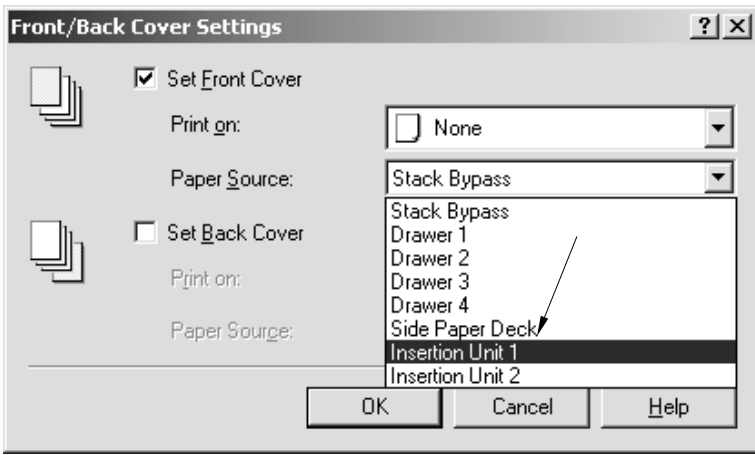
When [Insertion Unit] is to be selected in [Front/Back Cover Settings], it is necessary that [Insertion Unit] is selected in [Device Settings] in advance.



F-2-28



F-2-29



F-2-30

Nov 14 2005

Canon